

一、适用范围

二、预防性消毒的原则

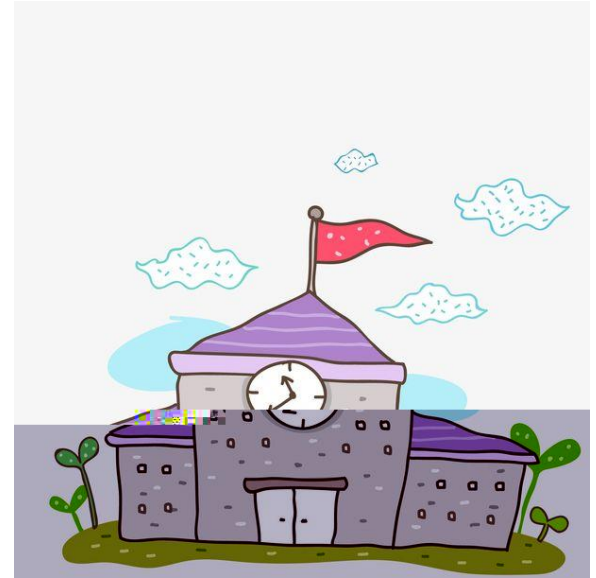
三、公共场所预防性消毒

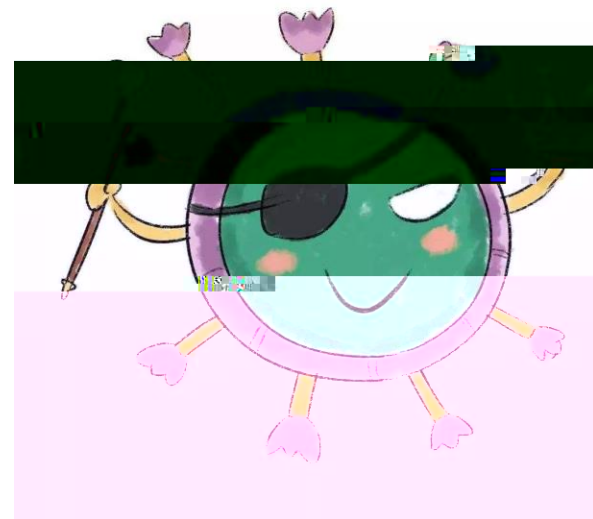
四、环境

五、公共场所预防性消毒

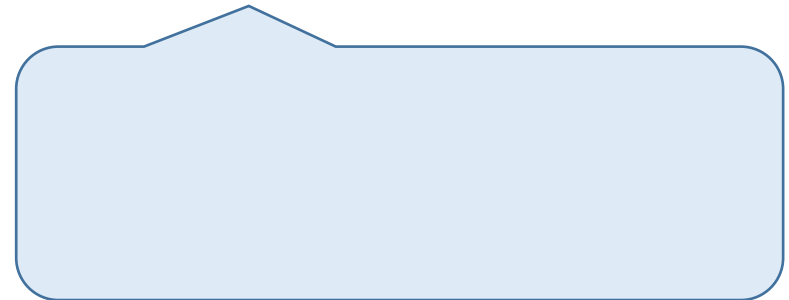
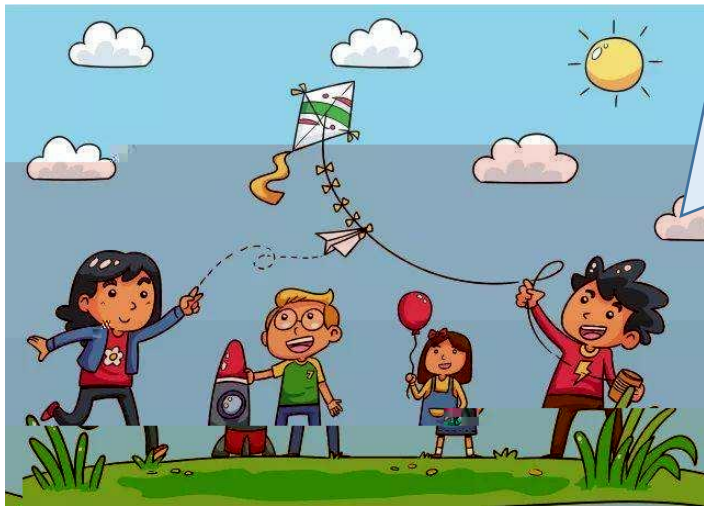
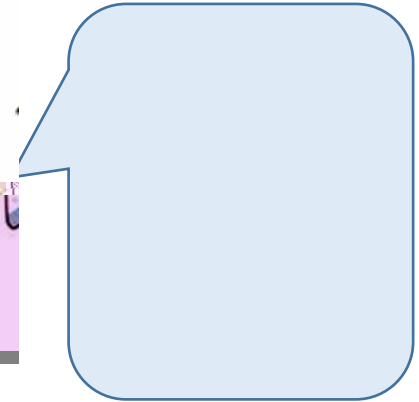
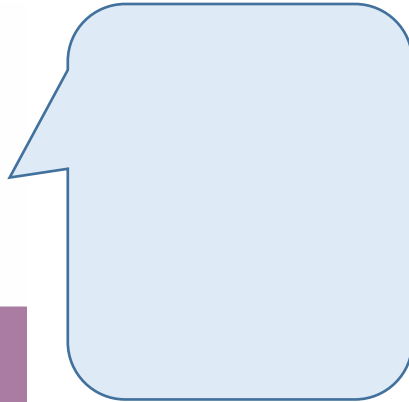
六、消毒

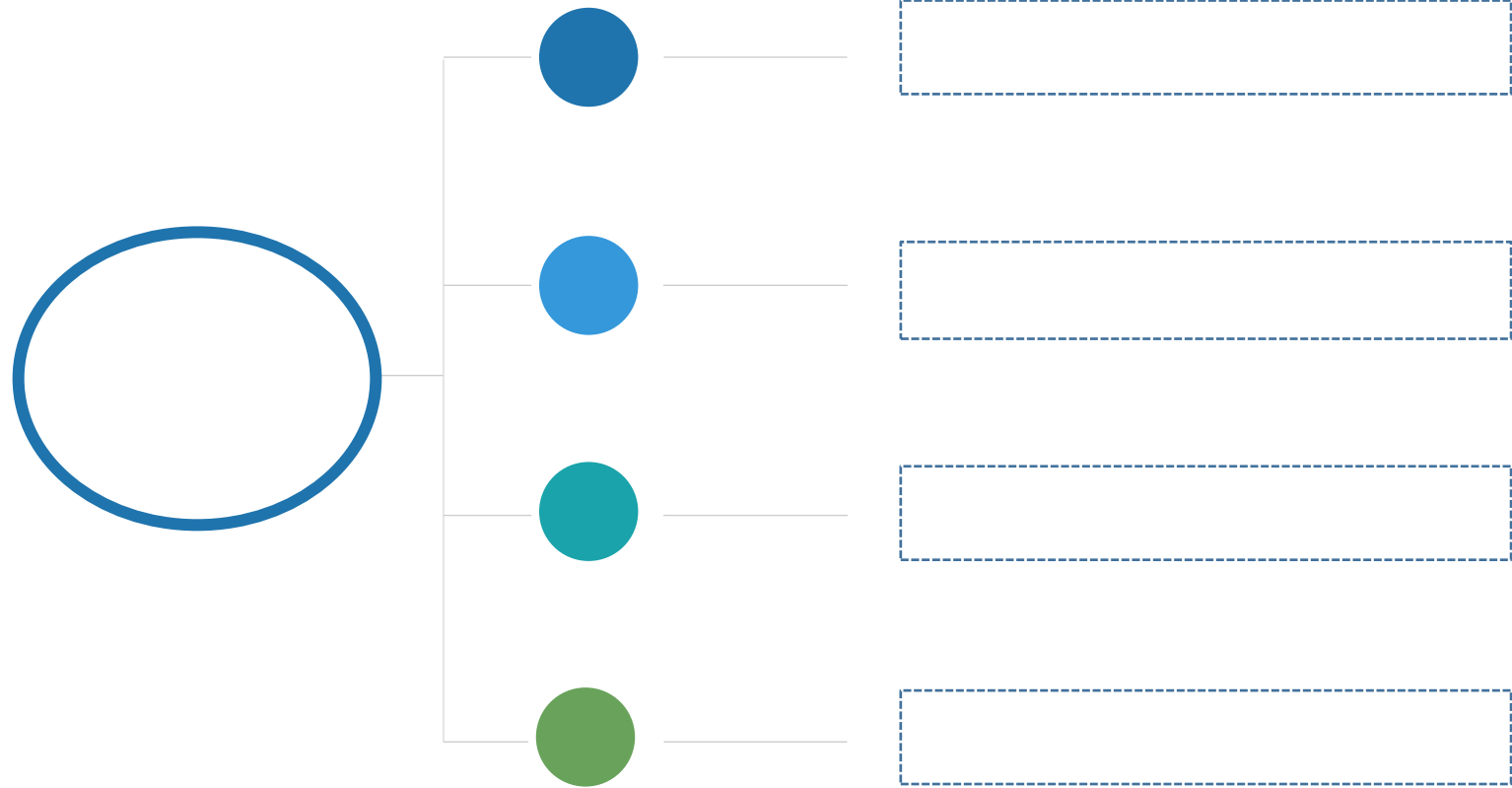
七、消毒





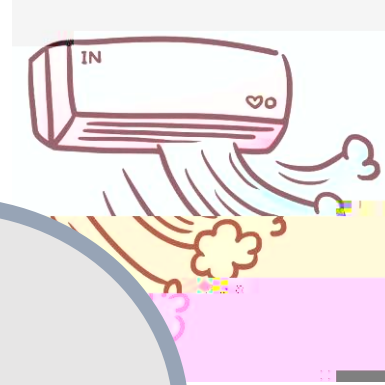




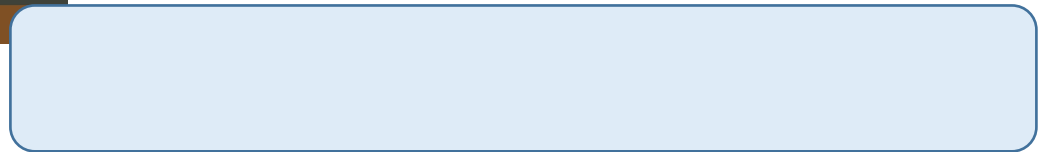
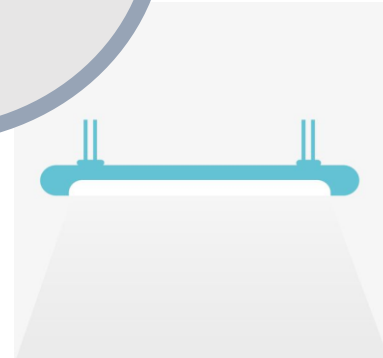
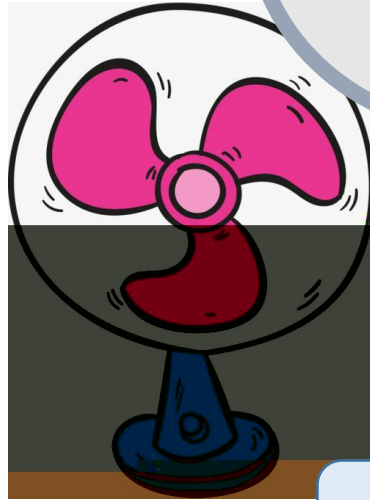


1.

2
30



2.

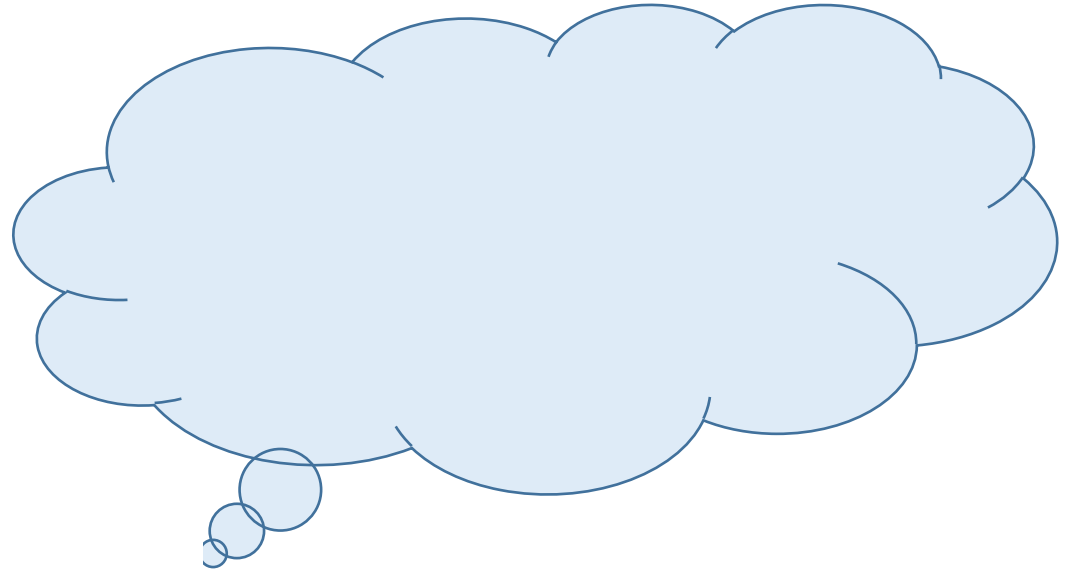
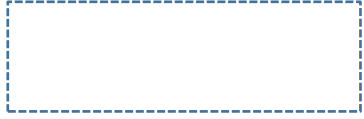




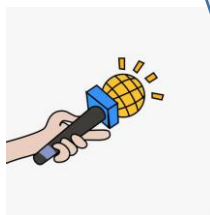
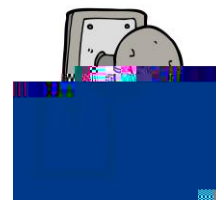
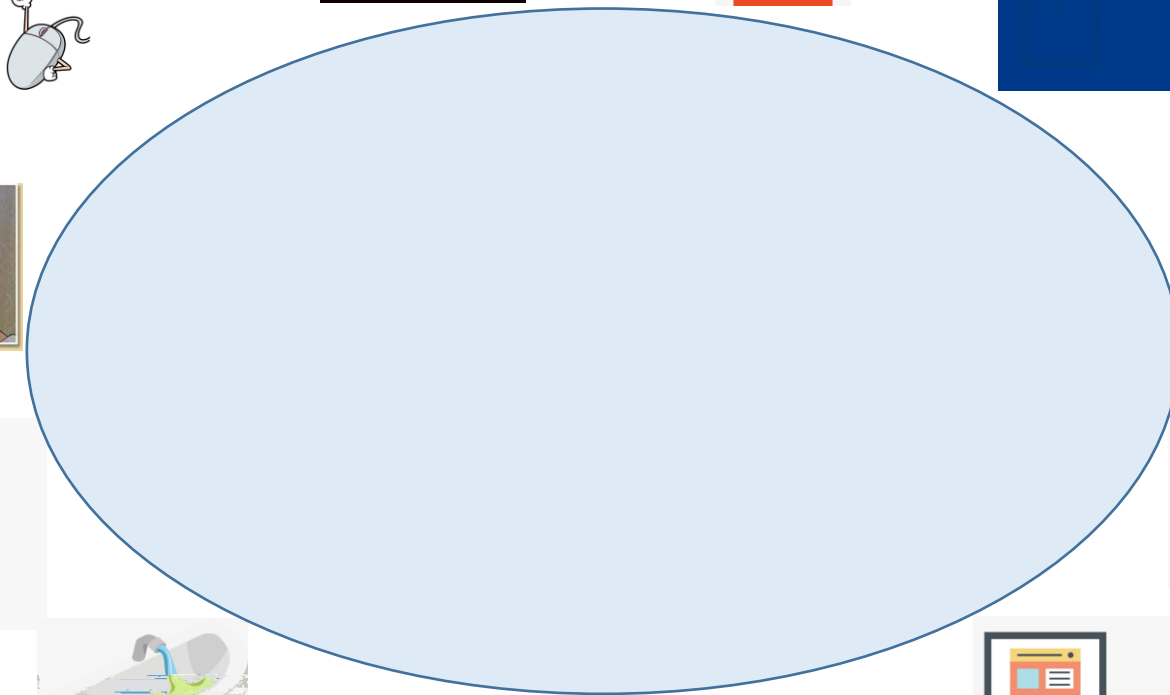
[Empty dashed rectangular box for text]

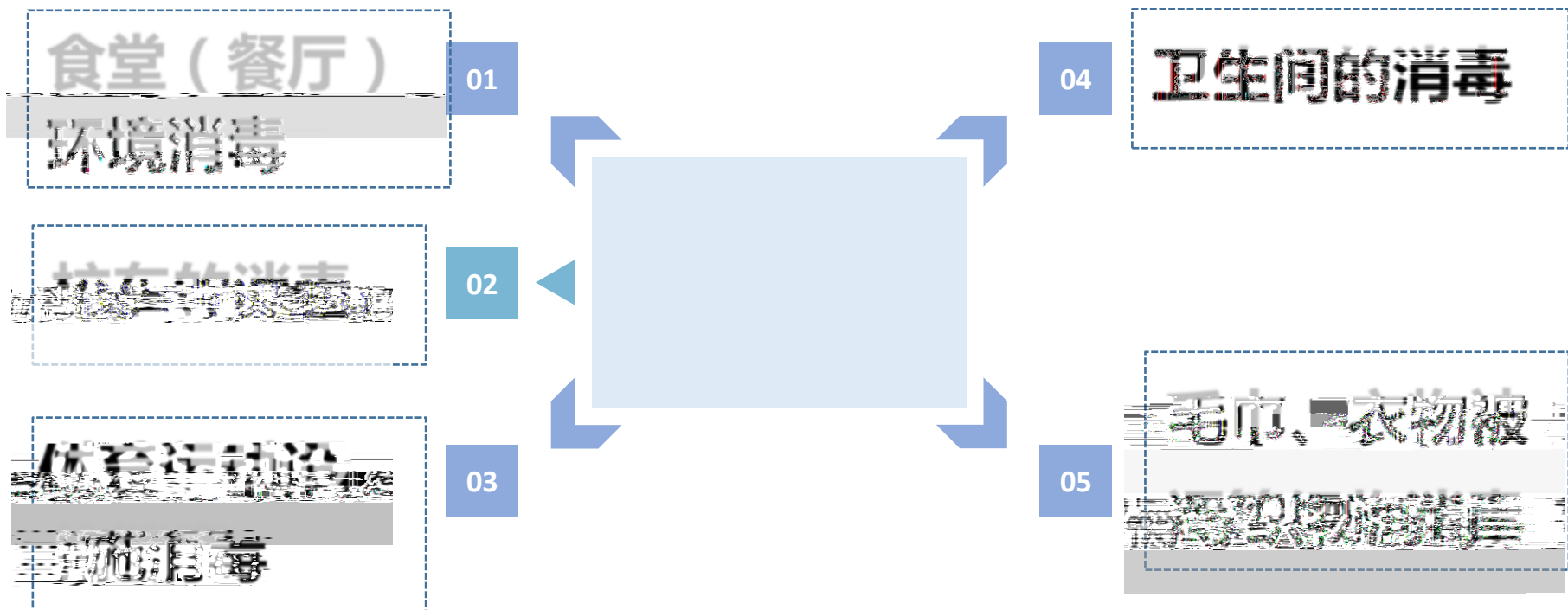
[Empty rounded rectangular box for text]

[Empty rounded rectangular box for text]

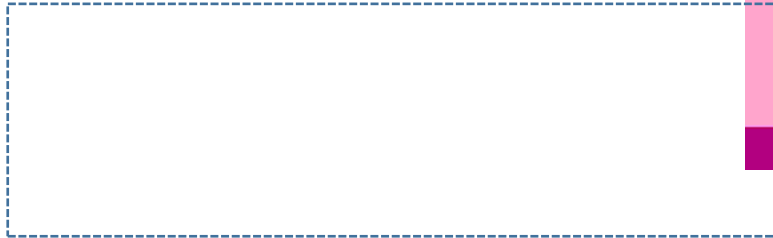
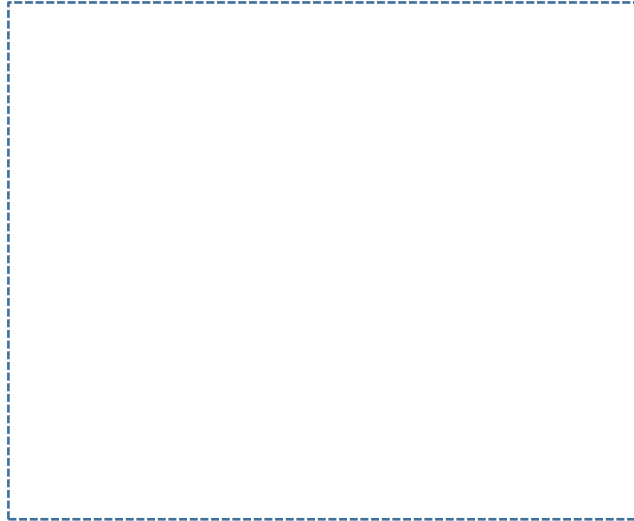
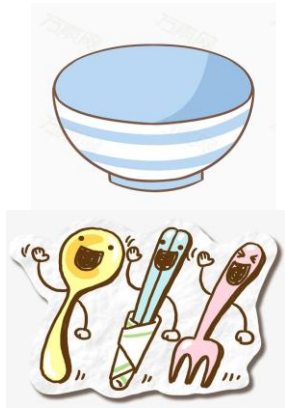


物体表面消毒

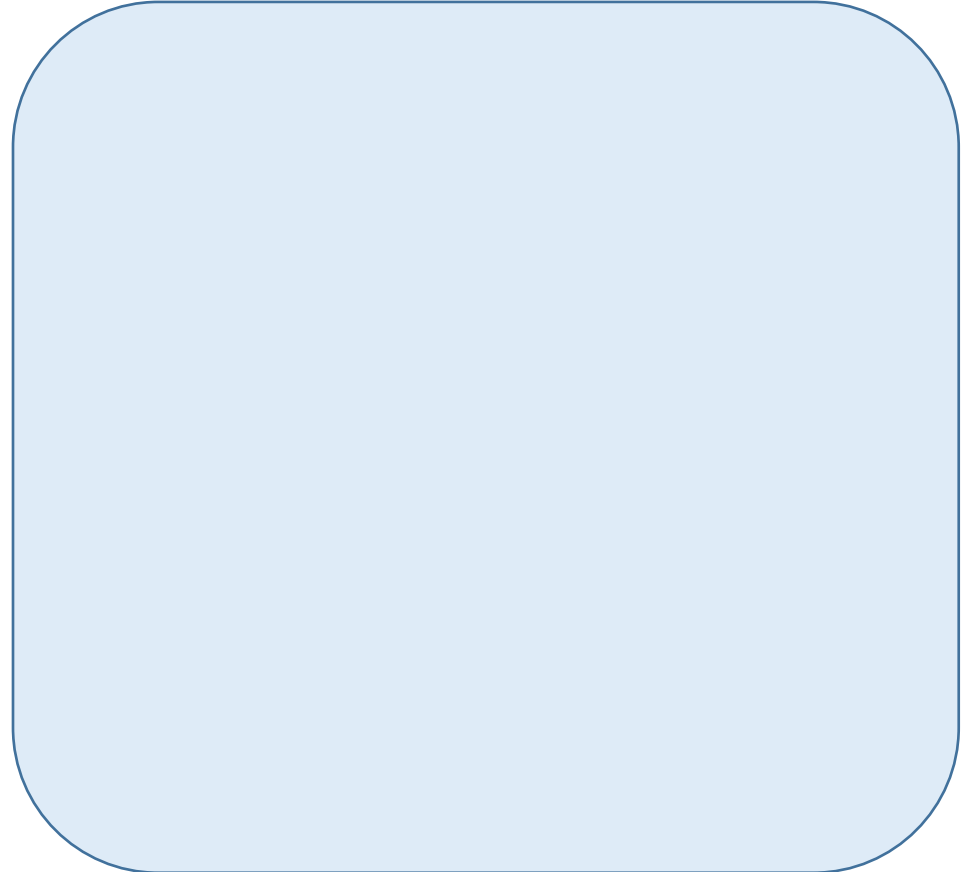
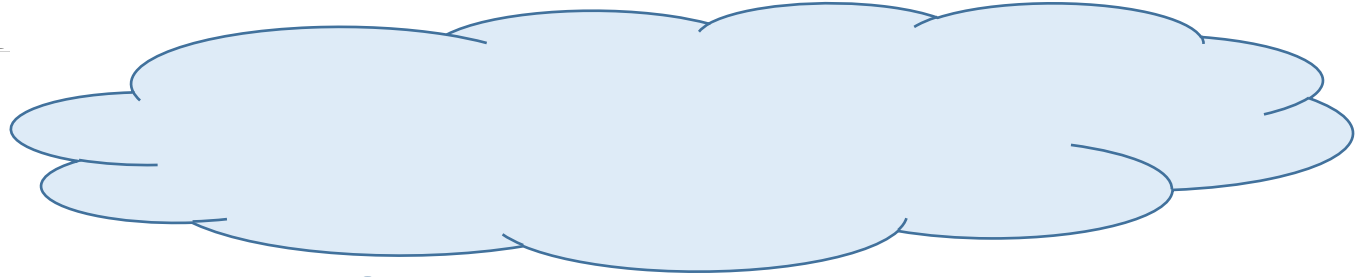




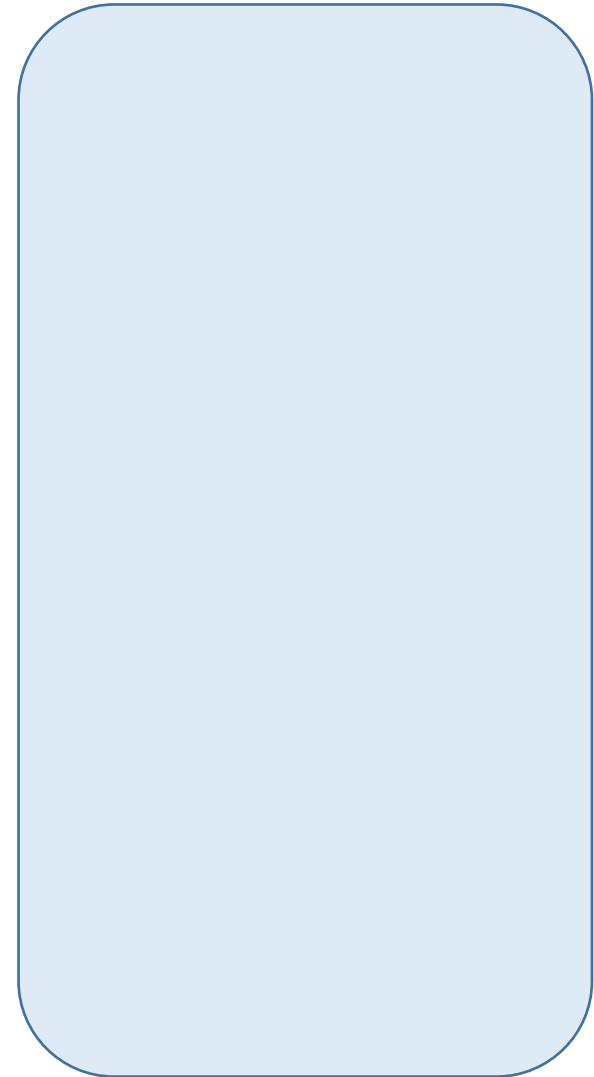
食堂（餐厅）环境消毒



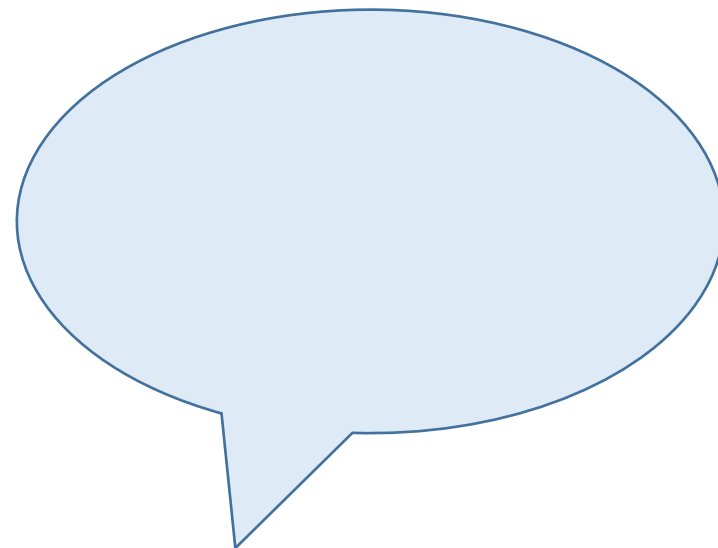
校车的消毒



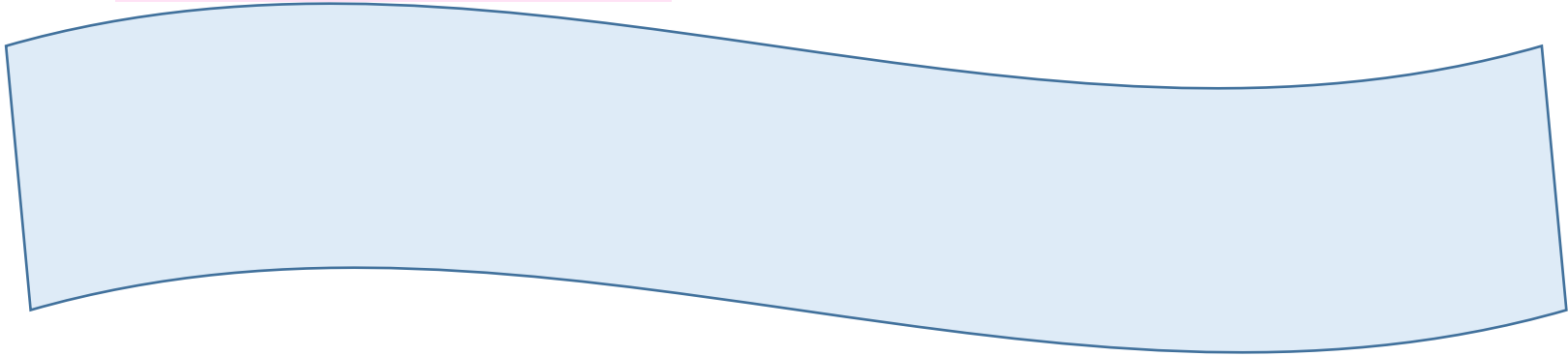
体育运动设施消毒

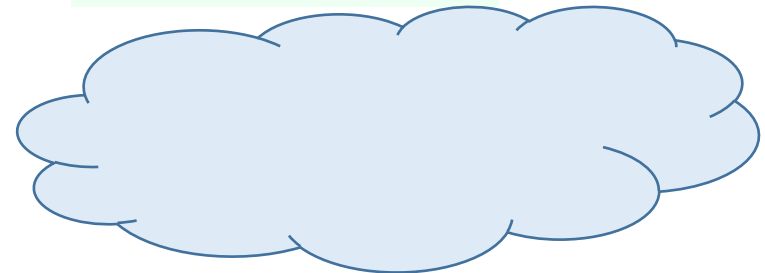
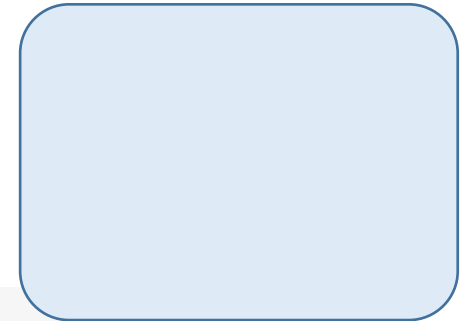
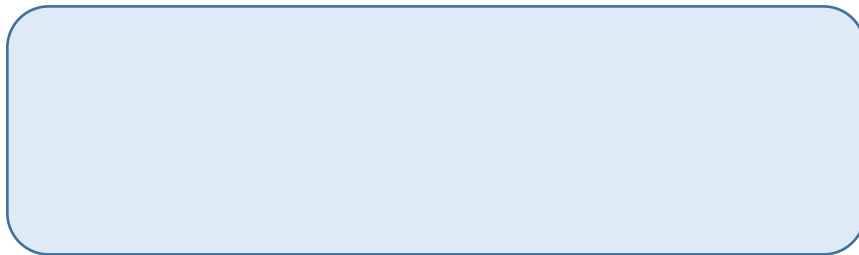
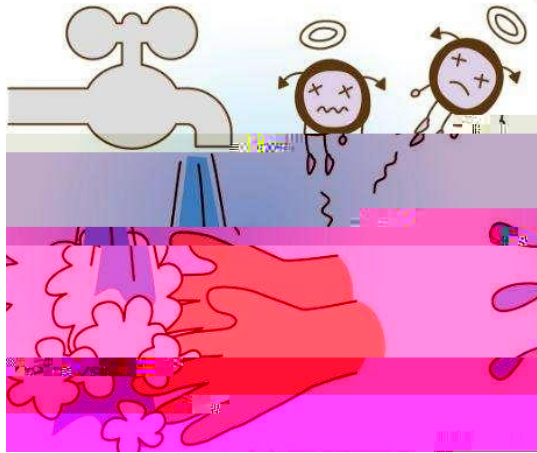


卫生间的消毒



运动：衣物整理与收纳





1. 常见消毒剂及配制



1. 有效氯浓度500 mg/L的含氯消毒剂配制方法：

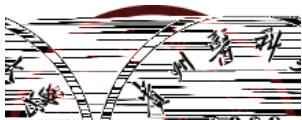
2. 75%乙醇消毒液：直接使用

3. 其他消毒剂按产品标签标识

以杀灭肠道致病菌的浓度进行

配制和使用





疫情就是命令
防控就是責任